

# 760T-30 DURAWALL® Fiberglass Rectangular Shower Wall

Fits Mustee 3060 ShowerTub™ & 360 ADA Barrier-Free DURABASE® Shower Floors





Model 760T-30WHT shown with optional 3060R ShowerTub™ Floor, 60.407 STYLEMATE® Brushed-Nickel finish Enclosure, shower valve and head.

If you are planning to replace a standard bathtub with Mustee's popular 3060 ShowerTub™ or 360 Barrier-Free Shower Floors, then finish off the installation in style with the 760T-30 DURAWALL® Shower Wall. Featuring a handsome embossed tile pattern on back and side panels, the 760T-30 will create a truly elegant finished look to your new shower alcove.

## Features:

- Produced from high-grade, reinforced, molded fiberglass for optimum strength and impact resistance using matched metal molds under heat and pressure.
- Fits 60" x 30" alcove...same footprint as a standard bathtub.
- Embossed large-tile pattern on back and side panels
- Five-panel wall system with interlocking tongue-and-groove seams that assemble quickly to create a watertight wall surround.
- Mounts direct-to-stud with mounting flanges hidden behind drywall or other wall treatment.
- Available in white.
- Smooth, colorfast deep gloss finish, resists scuffs.
- Mold and mildew-resistant...easy to clean.
- Ideal for new or remodel projects...fits DURABASE® 3060 ShowerTub™ and 360 Barrier-Free Shower Floors (see reverse side).
- Available STYLEMATE® By-Pass Shower Enclosures feature tempered safety glass and a range of finishes (see reverse side).
- Designed to support CareGiver® Grab Bars and Fold-Down Seats as needed (see reverse side).

**Code Accepted:** DURAWALL® Fiberglass Shower Walls meet or exceed performance requirements as listed:

- American Society of Testing and Materials (ASTM)—D 635, E-84 and E-162 
- American National Standards Institute (ANSI)—Specification Z124.1.2 

## Design Features

Self-aligning side panels with interlocking tongue-and-groove seams



Reverse side of center panel has clips for securing to shower floor

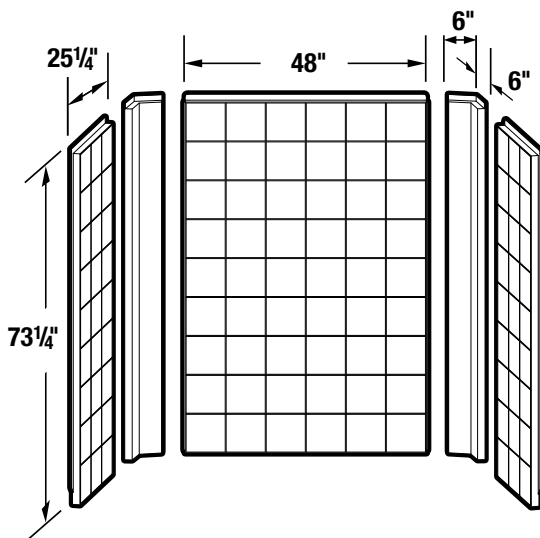


1 1/4" flanges fasten direct-to-studwalls with screws, drywall conceals flanges



**572.300 VARISTONE™ Shelf** — Optional (see reverse side for details)

## Specifications



Model	Color
760T-30WHT	White

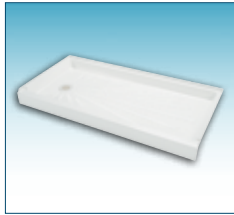
**General:** Furnish and install as shown on plans, DURAWALL® Shower Wall Model: 760T-30WHT, as manufactured by E.L. Mustee & Sons, Inc. Shall be semi-gloss 5-piece wall. Panels are molded fiberglass, using matched metal molds under extreme heat and pressure with a minimum uniform thickness of 125 mils and mount direct-to-studwalls. Includes center panel and two corner and side panels. Self-aligning panels using an interlocking tongue-and-groove seam. Shall meet ANSI Specification Z 124.1.2. Color: White.

## Companion Products

E.L. Mustee & Sons, Inc. offers a number of products that can be ordered separately to customize your 760T-30 Shower Wall installation

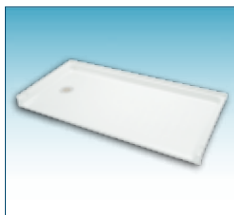
### DURABASE® SHOWER FLOORS

Fits the 760T-30 and are sized to replace a standard 30" x 60" bathtub.



#### 3060 SHOWERTUB® Shower Floor

Model	Drain Location	Color	Size
3060L	LH	White	60" wide x 30" deep
3060R	RH	White	60" wide x 30" deep



#### 360 Barrier-Free Shower Floor

Model	Drain Location	Color	Size
360L	LH	White	60" wide x 30" deep
360R	RH	White	60" wide x 30" deep



#### 360.100 Entry Ramp

Model	Color	Size
360.100	White	60" wide x 12" deep

### 572.300 VARISTONE™ SHELF

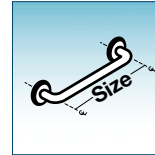


Model	Color	Size
572.300	White	12" wide x 7" tall

These self-draining 12" x 7" color-matched shelves, easily mount to the 760T-30WHT shower wall at any location. Order multiple shelves to best meet your personal preference.

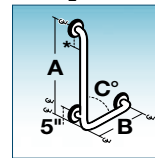
### CareGiver® Safety Grab Bars

#### 1½" Dia. Straight



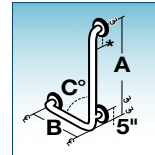
Model No.	Size	Angle
390.305	18"	
390.301	24"	
390.306	36"	
390.307	42"	
390.302	48"	

#### 1½" Dia. Angled



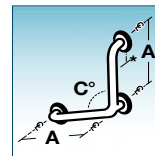
Model No.	A x B	C
390.308, LH	24" x 16"	90°
390.309, LH	32" x 16"	90°

LH= Left Hand



Model No.	A x B	C
390.310, RH	24" x 16"	90°
390.311, RH	32" x 16"	90°

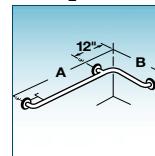
RH= Right Hand



Model No.	A x A	C
390.312	30" x 30"	90°
390.313	12" x 12"	120°
390.314	16" x 16"	120°
390.315	24" x 24"	120°

Rotate for RH or LH use

#### 1½" Dia. Inside-Corner Style



Model No.	A x B	C
390.304	34" x 18"	90°

### STYLEMATE® By-Pass Framed & Frameless Enclosures



Model	Finish	Model	Finish	Glass	Height	Opening
<i>Framed Design</i>		<i>Frameless Design</i>				
60.403	Chrome	60.406	Chrome	Clear	69"	59"
60.404	Brushed Nickel	60.407	Brushed Nickel	Clear	69"	59"
60.405	Oil-Rubbed Bronze	60.408	Oil-Rubbed Bronze	Clear	69"	59"

### CareGiver® Fold-Down Seat



**Model 390.413—**  
 23" wide x 14½" deep

The Model 390.413 rectangular wall-mounted seat provides comfortable seating, exceptional design features and long life.

To reorder, specify ADV-501

Notice: Our continuous commitment to product improvement may result in changes to product specifications without notice. Patented and patents pending. ADI/2-11/NM. Made and Printed in U.S.A.