

53 DURAWALL® Bathtub Wall

Thermoplastic · Fits Alcoves 30" x 60" or Less



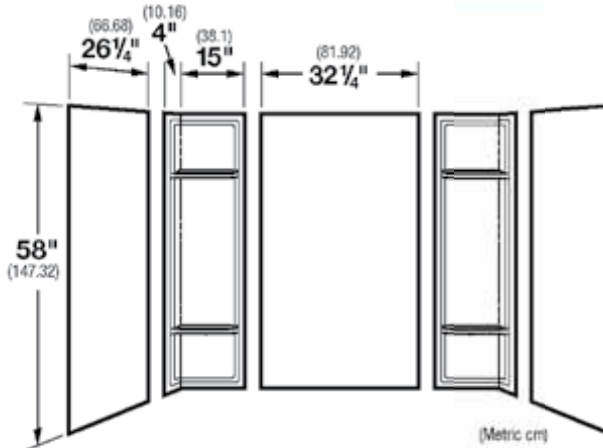
Enhancing the beauty of any bathtub alcove is easy with the deluxe Model 53 DURAWALL® bathtub wall system from E.L. Mustee & Sons, Inc...the leader in high quality bathtub and shower wall systems.

The classic look of the 53 DURAWALL® is the perfect way to add an elegant touch to any existing or new bathroom. It's adhesive-mount installation and seamless corner overlaps enable installers to create a strong, watertight, beautifully finished bathtub alcove quickly and easily.

Features:

- Formed from high-grade thermoplastic
- Fits bathtub alcoves up to 30" deep and 60" wide
- Four molded-in, self-draining shelves
- Five-panel construction with seamless corner panels
- Easily adjustable for out-of-square alcoves
- Smooth, glossy, colorfast finish; white & bone
- Adhesive-mounts to drywall and like surfaces
- Suitable for use with Mustee's TOPAZ® bathtubs or any other make bathtubs

Specifications



Model	Color	Model	Color
53WHT	White	53BN	Bone

General: Furnish and install as shown on plans, DURAWALL® Bathtub Wall Model 53, as manufactured by E.L. Mustee & Sons, Inc. The hi-impact thermoplastic wall system shall be 5-piece construction with four formed shelves. One-piece, seamless corner panels with overlapping edges. Uniform color throughout entire thickness of each panel. Color _____ (White, Bone).

Carton Contains: Three side, back panels and two corner panels. Carton is 32" x 59" x 5", weight 30 lbs., cubic ft. 5.

Requires three or more 11 oz. cartridges of top-grade panel adhesive for bonding polystyrene or polystyrene foam materials. Don't use adhesive containing tar, asphalt, lacquer thinner or toluene.

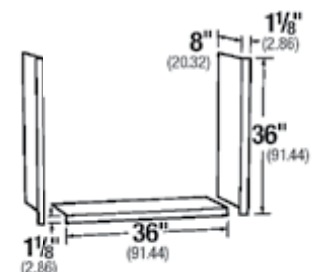
52.600W DURATRIM™ Window Trim Kit, White



Protect Window Above Bathtub. Ideal for trimming any window alcove. 3-piece panels fit windows up to 36" wide with a 8" sill depth. Easily trimmed...adhesive mounts, white colorfast finish.

General: Furnish and install as shown on plans, DURATRIM™ Window Trim Kit Model 52.600W, as manufactured by E.L. Mustee & Sons, Inc. Made of white, high-impact thermoplastic, consists of three 36" by 8" panels.

Requires one 11 oz. cartridge of top-grade panel adhesive for bonding polystyrene or polystyrene foam materials. Don't use adhesive containing tar, asphalt, lacquer thinner or toluene.



952 DURAWALL® Bathtub Wall

Thermoplastic • Fits Alcoves 30" x 60" or Less



Enhancing any bathtub alcove can be beautifully accomplished with the deluxe Model 952 DURAWALL® bathtub wall system.

The exceptional quality, features and finish of the 952 DURAWALL® makes it the perfect way to add a touch of elegance and style to any bathroom.

Features:

- High-grade thermoplastic
- Four molded-in, self-draining shelves
- Seamless corner panels
- Five-panel package
- Easily adjustable for out-of-square alcoves
- Smooth, matte, colorfast finish; white and bone
- Adhesive-mounts to drywall and like surfaces

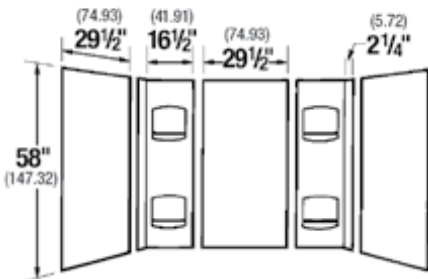
Specifications

Model	Color	Model	Color
952WHT	White	952BN	Bone

General: Furnish and install as shown on plans, DURAWALL® Bathtub Wall Model 952, as manufactured by E.L. Mustee & Sons, Inc. The hi-impact thermoplastic wall system shall be 5-piece construction with four formed shelves. One-piece, seamless corner panels with overlapping edges. Uniform color throughout entire thickness of each panel. Color _____ (White, Bone).

Carton Contains: Two side panels, one center panel and two corner panels. Carton is 29.2" x 58" x 3.5", weight 21 lbs., cubic ft. 3.3.

Requires three or more 11 oz. cartridges of top-grade panel adhesive for bonding polystyrene or polystyrene foam materials. Don't use adhesive containing tar, asphalt, lacquer thinner or toluene.



950 DURAWALL® Bathtub Wall

Thermoplastic • Economy • Fits Alcoves 30" x 60" or Less



Looking to stretch your bathroom remodeling budget? Then the 950 DURAWALL® Bathtub wall is the ideal solution. This affordable, stylish wall system has the construction, look and finish of wall systems costing significantly more.

Features:

- High-grade thermoplastic
- Four molded-in, self-draining shelves
- Seamless corner panels
- Five-piece construction
- Easily adjustable for out-of-square alcoves
- Smooth, matte, colorfast finish; white
- Adhesive-mounts to drywall and like surfaces

Specifications

Model	Color
950WHT	White

General: Furnish and install as shown on plans, DURAWALL® Bathtub Wall Model 950, as manufactured by E.L. Mustee & Sons, Inc. The white thermoplastic wall system shall be 5-piece construction with four formed shelves. One-piece, seamless corner panels with overlapping edges. Uniform color throughout entire thickness of each panel. Color: White.

Carton Contains: Three flat and two corner panels. Carton is 56" x 38" x 3", weight 20 lbs., cubic ft. 3.3.

Requires three or more 11 oz. cartridges of top-grade panel adhesive for bonding polystyrene or polystyrene foam materials. Don't use adhesive containing tar, asphalt, lacquer thinner or toluene.

